

parkmate **HD**

WIDE ANGLE REVERSE CAMERA *with* GRID-LINES & FLIP IMAGE



INSTALLATION / USER MANUAL



MODEL: CMD-14N

www.parkmate.com.au

Thank you for purchasing Parkmate's CMD-14N camera. We are certain that our product will give you trouble-free operation while providing you with a safety feature that enhances your driving experience.

Our products, like most after-market safety enhanced devices, are to assist and aid the driver, not to replace the manual function of the person operating the vehicle.

Although this is a visual aid and will allow you to view what is behind the vehicle, it does not remove the responsibility of driving the vehicle from the driver. The legal responsibility and safe driving practise remains with the driver at all times. You have purchased this product with the understanding that its use is as an aid only. We highly recommend that you have this product professionally installed to ensure that it will provide the functions it is set out to perform.

CMD-14N Component List:



Notes:

- Please read this manual carefully before using the product.
- This system is intended as an aid to safe reverse operation. Drivers must always use extreme caution when operating a vehicle.
- Specifications subject to change without prior notice.

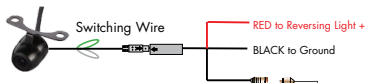
Warning:

- Do not disassemble the camera or cut the camera cable as this voids the warranty. Disassembling the camera will compromise the waterproof seal.
- Do not remove the Directed warranty sticker as this voids warranty.

Technical Specifications:

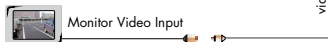
Signal System:	NTSC
Horizontal Resolution:	550TVL
Minimum Illumination:	0.2Lux
Diagonal Angle:	170°
Waterproof Grade:	IP67
Nominal Voltage:	DC 12V
Working Temp.:	-20°C to 85°C

Wiring Diagram:



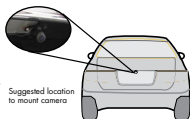
Front view option: CMD-14N functions as a rear view camera standard and also supports front view. For front view application, you can cut the thin WHITE wire near the camera lead and restart power to see the image reversed.

Grid-Line option: CMD-14N has parking grid-lines as a default. To remove grid-lines, cut the thin GREEN wire near the camera lead. Power on and the grid-lines will now be removed.

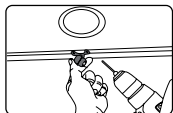


Installation - Butterfly Mount

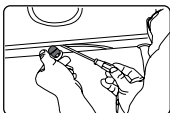
1. Select a flat and centred location near the number plate lamp at the rear of the vehicle to mount camera.



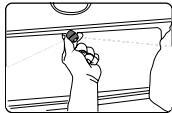
IMPORTANT: When selecting this location it is highly recommended that the image transmitted by the camera show the rear bumper and area behind the vehicle.



2. Attach the 3M tape to the bracket of the camera, and drill a small hole for the first screw.



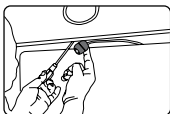
3. Use a screw driver to fix the first screw, but don't tighten it yet.



4. Insert camera wire through newly drilled hole and mount securely in place.



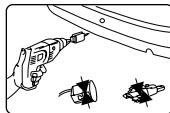
5. Mark the position suitable for the second screw and drill a small hole for it.



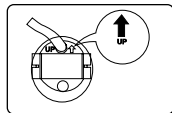
6. Fix the second screw and tighten both screws.

Installation - Flush Mount

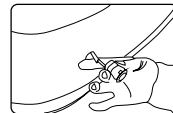
1. Unscrew the upper part of the camera anticlockwise, detach the upper part and bracket, and place the bumper adaptor instead.



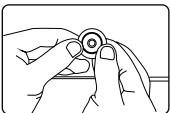
2. Mark the middle position of rear bumper, and drill a hole with the provided 16.5mm hole saw.



3. Adjust the camera to turn the UP arrow straight up-wards.



4. Pull the camera lead through the bumper hole before fixing the camera.



5. Put the camera into the hole and use both your thumbs to press it evenly to ensure tight and flat mounting.

Testing

How to test:

1. Apply the parking brakes. (Safety Precaution)
2. Turn Ignition on. (DO NOT TURN ON VEHICLE)
3. Shift into reverse gear.
4. Image should appear on the monitor.

Trouble Shooting:

Problem	Solution
"No Signal" appears while reversing	1. Check video input connections 2. Check camera power connections
Video image is not sharp	Check camera lens for debris

Maintenance:

Always keep camera clear from dirt and mud. Clean camera with a soft moist cloth.

Australian Residents - Warranty Terms & Conditions:

Our goods come with guarantees that cannot be excluded under the Australian Consumer Law. You are entitled to a replacement or refund for a major failure and for compensation for any other reasonably foreseeable loss or damage. You are also entitled to have the goods repaired or replaced if the goods fail to be of acceptable quality and the failure does not amount to a major failure.

This warranty is provided in addition to your rights under the Australian Consumer Law.

Directed Electronics warrants that this product is free from defects in material and workmanship for a period of 12 months from the date of purchase or for the period stated on the packaging. This warranty is only valid where you have used the product in accordance with any recommendations or instructions provided by Directed Electronics.

This warranty excludes defects resulting from alterations of the product, accident, misuse, abuse or neglect.

In order to claim the warranty, you must return the product to the retailer from which it was purchased or if that retailer is part of a National network, a store within that chain, along with satisfactory proof of purchase. The retailer will then return the goods to Directed Electronics. Directed Electronics will repair, replace or refurbish the product at its discretion. The retailer will contact you when the product is ready for collection. All costs involved in claiming this warranty, including the cost of the retailer sending the product to Directed Electronics, will be borne by you.

Directed Electronics Address: 44 Translink Drive, Keilor Park Victoria Australia 3042

Ph: +61 03 8331 4800

Email: returns@directed.com.au

To view the complete Parkmate range or for details on how to contact us, please visit our website at www.parkmate.com.au

parkmate HD

www.parkmate.com.au



DIRECTED.
AUSTRALIA

www.directed.com.au